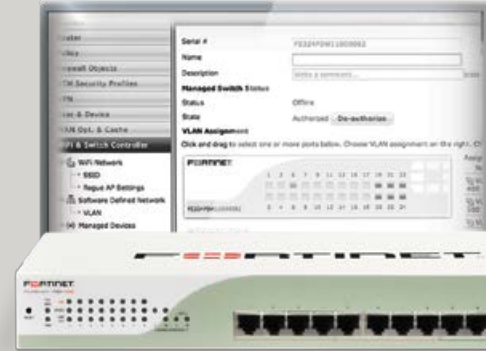




FortiSwitch™ Secure Access Switches



FortiSwitch Secure Access Switches

FS-108D-POE, 124D, 124D-POE, 224D-POE, 224D-FPOE, 248D-POE, 248D-FPOE, 424D, 424D-POE, 424D-FPOE, 448D, 448D-POE, 448D-FPOE, 524D, 524D-FPOE, 548D and 548D-FPOE (henceforth referred to as FortiSwitch D-series)

FortiSwitch Secure Access switches deliver outstanding security, performance and manageability for threat conscious small to mid-sized businesses, distributed enterprises and branch offices. Tightly integrated into the FortiGate® Network Security Platform, the FortiSwitch Secure Access switches can be managed directly from the familiar FortiGate interface. This single pane of glass management provides complete visibility and control of all users and devices on the network, regardless of how they connect.

When a device connects to a Secure Access Switch Ethernet port, it is first identified, and then the user is authenticated. Once authenticated, access to the network is granted based on pre-defined security policy from the FortiGate, ensuring secure network access across the enterprise, without impacting the user experience.

Secure Managed Switches for Wire Closet Installation

The FortiSwitch D-Series switches are ideal for the next generation applications, where increased productivity can be achieved through faster network access speeds via dedicated Gigabit Ethernet ports. With a compact 1RU form factor, these switches are ideally suited for high density enterprise or classroom wire closet installations, delivering a truly secure network access platform for wired Ethernet devices.

Simple Network Deployment and Compliance

The Power over Ethernet (PoE) capability enables simple installation of wireless Access Points and IP phones in the network, with power and data being delivered over the same network cable. There is no need to contract electricians to install power for your PoE capable devices anymore, reducing your overall network TCO.

By leveraging the FortiSwitch VLAN segmentation feature of the switches, enterprise networks can support the convergence of voice, data and wireless traffic onto a single network platform. FortiSwitch network segmentation can even be managed from the FortiGate interface, simplifying the process of meeting compliance requirements for data separation.

FortiSwitch Secure Access switches deliver outstanding security, performance and manageability for threat conscious small to mid-sized businesses, distributed enterprises and branch offices.

Highlights

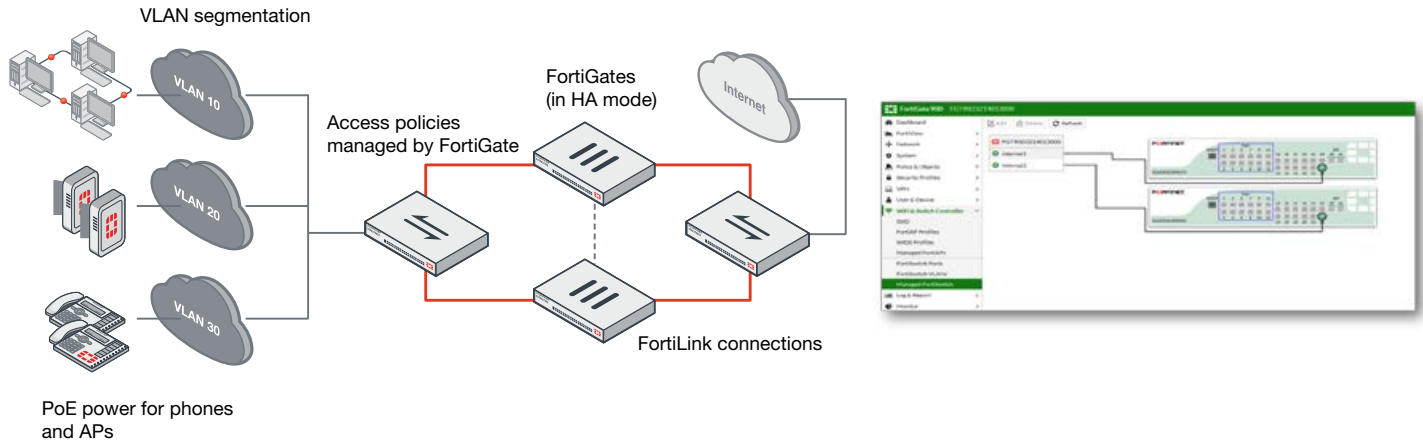
- Secure Access switches suitable for wire closet and desktop installations.
- Devices are identified and users authenticated prior to being granted access to the network.
- Centralized security management and reporting from FortiGate interface.
- Up to 48 ports in a compact 1 RU form factor.
- Power over Ethernet capable, including PoE+.
- Ideal for converged network environments; enabling voice, data and wireless traffic to be delivered across a single network.



DEPLOYMENT OPTIONS

FortiLink Mode

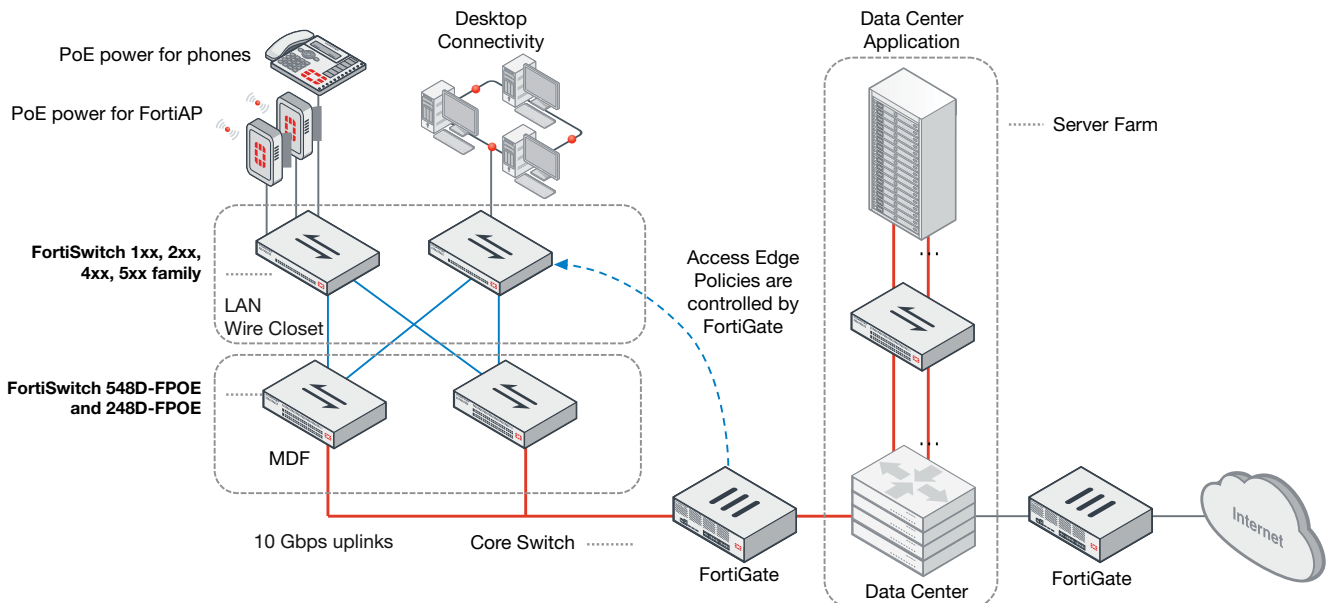
The FortiSwitch Secure Access Switch series integrates directly into the FortiGate* Connected UTM, with switch administration and access port security managed from the familiar FortiGate interface. Regardless of how users and devices connect to the network, you have complete visibility and control over your network security and access through this single pane of glass, perfectly suited to threat-conscious organizations of any size.



* Selected models only

Standalone Mode

Virtualization and cloud computing have created dense high-bandwidth Ethernet networking requirements in the data center, pushing the limits of existing data center switching. FortiSwitch Data Center switches meet these challenges by providing a high performance 10 or 40 GE capable switching platform, with a low Total Cost of Ownership. Ideal for Top of Rack server or firewall aggregation applications, as well as enterprise network core or distribution deployments, these switches are purpose-built to meet the needs of today's bandwidth intensive environments.



Key Features & Benefits

Single Management Framework	Reduces complexity and decreases management cost with network security functions managed through a single console.
Single Policy Provisioning	The same security policy can apply to a user or device regardless of how or where they connect to the network. Enables access to certain network ports based on the role of a user within the organization, such as in shared conference rooms or engineering facilities.
Centralized Authentication	All users are authenticated against the same user database, regardless of whether they connect to the wired or wireless network, including temporary guest users.
Role-Based Ports	Enables access to certain network ports based on the role of a user within the organization, such as in shared conference rooms or engineering facilities.

CAPABILITIES: FORTILINK MODE VS. STANDALONE MODE

	FORTISWITCH D-SERIES	
	STANDALONE SWITCH	FORTILINK MODE (FORTIGATE)
Security		
802.1x Port Authentication	Yes	Yes
MAC Address-Based Authentication	No	Yes
MAC Black/White Listing	No	Yes
Layer 3,4 Stateful Firewall to Control Access	No	Yes
TACACS+/RADIUS Admin Access	Yes	Yes
DHCP Relay/DHCP Snooping	No	Yes
Virtual Domain	No	Yes
Routing		
Layer 3, Dynamic Routing	No	Yes
Inter-VLAN Routing	Yes*	Yes
Policy-Based Routing	No	Yes
DNS Server	No	Yes
VLANs Supported	4K	1K
Management		
Auto Discovery of Multiple Switches	1	16 (model dependent)
Software Upgrade of Switches	1 switch	Central upgrade of each switch
VLAN Configuration	1 switch	Central VLAN provisioning of entire switch network
Policy Control of Users and Devices	No	Yes
Syslog Collection	Yes	Yes (FortiGate syslog only)
Switch POE Control	Yes	Yes**
LAG support from FortiSwitch to FortiGate	Yes	Yes**
High Availability		
Support for FortiGate in HA cluster	Yes	Yes**
UTM Features		
Firewall	No	Yes
IPS, AV, Application Control	No	Yes

* supported in 124D, 124D-POE, 200 (except 224D-POE), 400 and 500 series.

** enabled with FOS 5.4 release

SOFTWARE FEATURES (STANDALONE MODE)

FORTISWITCH D-SERIES	
Layer 2	
Jumbo Frames	Yes
Auto-negotiation for port speed and duplex	Yes
IEEE 802.1D MAC Bridging/STP (will interoperate)	Yes
IEEE 802.1w Rapid Spanning Tree Protocol (RSTP, will interoperate)	Yes
IEEE 802.1s Multiple Spanning Tree Protocol (MSTP)	Yes
IEEE 802.1p Mapping to Priority Queue	Not supported
Edge Port / Port Fast	Yes
IEEE 802.1Q VLAN Tagging	Yes
Private VLAN	Not supported on FS-108D-POE, FS-224D-POE
IEEE 802.3ad Link Aggregation with LACP	Yes
Unicast/Multicast traffic balance over trunking port (dst-ip, dst-mac, src-dst-ip, src-dst-mac, src-ip, src-mac)	Yes
IEEE 802.1AX Link Aggregation	Yes
Spanning Tree Instances (MSTP/CST)	15/1
IEEE 802.3x Flow Control and back-pressure	Yes
IEEE 802.3 10Base-T	Yes
IEEE 802.3u 100Base-TX	Yes
IEEE 802.3z 1000Base-SX/LX	Yes
IEEE 802.3ab 1000Base-T	Yes
802.3ae 10 Gigabit Ethernet	in FS-5xx, 4xx family
802.3 CSMA/CD Access Method and Physical Layer Specifications	Yes
Storm Control	Yes (except FS-108D-POE, FS-224D-POE)
MAC, IP, Ethertype-based VLANs	Yes
Virtual-Wire	Yes
Layer 3	
Static Routing (Software-based only)	Up to 64 static routes, usable for software routing (like management traffic)
Static Routing (Hardware-based)	64 static routes (16K on FS-5xx family)*
L3 Host/ARP Entries	4K on FS-1xx, 2xx, 4xx family*; 24K on FS-5xx family
Services	
IGMP Snooping (v1/v2/v3)	Please refer to the Release Notes.
Security	
Port Mirroring	Yes
Admin Authentication Via RFC 2865 RADIUS	Yes
802.1x authentication with port-based assignment	Yes
802.1x authentication with mac-based assignment	Yes
MAC-IP Binding	Yes**
sFlow	Yes, All models except FS-108D-POE, FS-224D-POE
ACL Tables	1K entries on FS-5xx family; 512 on FS-1xx, 2xx, 4xx families; Not supported on FS-108D-POE, FS-224D-POE
Management	
Telnet / SSH	Yes
HTTP / HTTPS	Yes
SNMP v1/v2c/v3	Yes
SNTP	Yes
LLDP (802.1ab, Link Layer Discovery Protocol) (receive and transmit)	Yes
Standard CLI and web GUI interface	Yes
Software download/upload: TFTP/FTP/GUI	Yes
Managed from FortiGate	Yes
Support for HTTP REST APIs for Configuration and Monitoring	Yes
RFC and MIB Support***	
RFC 2571 Architecture for Describing SNMP Framework	Yes
DHCP Client	Yes
RFC 854 Telnet Server	Yes
RFC 2865 RADIUS	Yes
RFC 1643 Ethernet-like Interface MIB	Yes

* Check Release notes/Admin guide for Static Routing release details. ** Available on 500 Series. *** MIBs have been tested with Solarwinds NPM tool.

continued on page 5

SOFTWARE FEATURES (STANDALONE MODE)

FORTISWITCH D-SERIES	
RFC and MIB Support**	
RFC 1213 MIB-II	Yes
RFC 1354 IP Forwarding Table MIB	Yes
RFC 2572 SNMP Message Processing and Dispatching	Yes
RFC 1573 SNMP MIB II	Yes
RFC 1157 SNMPv1/v2c	Yes
RFC 2030 SNTp	Yes

** MIBs have been tested with Solarwinds NPM tool.

SPECIFICATIONS

	FORTISWITCH 108D-POE	FORTISWITCH 124D	FORTISWITCH 124D-POE
Hardware Specifications			
Total Network Interfaces	8x GE RJ45 ports and 2x GE RJ45/SFP combo ports	24x GE/RJ45 ports and 2x GE SFP ports	24x GE/RJ45 ports and 2x GE SFP ports
Dedicated Management 10/100 Port	0	0	1
RJ-45 Serial Console Port	0	1	1
Form Factor	1 RU Rack Mount	1 RU Rack Mount Appliance	1 RU Rack Mount Appliance
Power over Ethernet (PoE) Ports	8 (802.3af)	0	12 (802.3af/802.3at)
PoE Power Budget	75 W	0	100 W
Mean Time Between Failures	> 10 years	> 10 years	> 10 years
System Specifications			
Switch Type	Web and CLI Managed	Web and CLI Managed	Web and CLI Managed
Switching Capacity	20 Gbps	52 Gbps	52 Gbps
Packets Per Second	40 Mpps	77 Mpps	77 Mpps
MAC Address Storage	16K	8K	16K
Network Latency	< 2µs	< 1µs	< 1µs
VLANs Supported	4K	4K	4K
Link Aggregation Group Size	8	8	8
Total Link Aggregation Groups	4	13	13
Packet Buffers	1 MB	1.5 MB	1.5 MB
DRAM	256 MB	512 MB	512 MB
FLASH	32 MB	64 MB	64 MB
Dimensions			
Height x Width x Length (inches)	1.7 x 7.9 x 13	1.73 x 5.51 x 17.32	1.73 x 9 x 12.99
Height x Width x Length (mm)	44 x 200 x 330	44 x 140 x 440	44 x 230 x 330
Weight	4.19 lbs (1.9 kg)	3.74 lbs (1.7 kg)	5.4 lbs (2.4 kg)
Environment			
Power Required	100–240V AC, 50–60 Hz	100–240V AC, 50–60 Hz	100–240V AC, 50–60 Hz
Power Supply	AC built in	AC built in	AC built in
Redundant Power	—	—	Optional FRPS-740
Power Consumption (Average / Maximum)	52.8 W / 95.1 W	14 W / 19 W	116 W / 116 W
Heat Dissipation	47.5 BTU/h	64.81 BTU/h	77 BTU/h
Operating Temperature	32–113°F (0–45°C)	32–122°F (0–50°C)	32–122°F (0–50°C)
Storage Temperature	-13–158°F (-25–70°C)	-4–158°F (-20–70°C)	-4–158°F (-20–70°C)
Humidity	5–90% non-condensing	10–90% non-condensing	10–90% non-condensing
Certification and Compliance			
FCC, CE, RCM, VCCI, BSMI, UL, CB, RoHS2			
Warranty			
Fortinet Warranty			
Limited lifetime* warranty on all models			

* Fortinet Warranty Policy: <http://www.fortinet.com/doc/legal/EULA.pdf>



FortiSwitch 108D-POE



FortiSwitch 124D

SPECIFICATIONS

	FORTISWITCH 224D-POE	FORTISWITCH 224D-FPOE	FORTISWITCH 248D-POE	FORTISWITCH 248D-FPOE
Hardware Specifications				
Total Network Interfaces	20x GE RJ45 ports and 4x GE RJ45/SFP combo ports	24x GE RJ45 ports and 4x GE SFP ports	48x GE RJ45 ports and 2x GE SFP ports	48x GE RJ45 ports and 4x GE SFP ports
Dedicated Management 10/100 Port	0	1	1	1
RJ-45 Serial Console Port	1	1	1	1
Form Factor	1 RU Rack Mount	1 RU Rack Mount	1 RU Rack Mount	1 RU Rack Mount
Power over Ethernet (PoE) Ports	12 (802.3af)	24 (802.3af/802.3at)	24 (802.3af)	48 (802.3af/802.3at)
PoE Power Budget	180 W (802.11af)	370 W	370 W	370 W
Mean Time Between Failures	> 10 years	> 10 years	> 10 years	> 10 years
System Specifications				
Switch Type	Web and CLI Managed	Web and CLI Managed	Web and CLI Managed	Web and CLI Managed
Switching Capacity	48 Gbps	56 Gbps	104 Gbps	104 Gbps
Packets Per Second	71 Mpps	83 Mpps	155 Mpps	155 Mpps
MAC Address Storage	16K	16K	16K	16K
Network Latency	< 2µs	< 1µs	< 1µs	< 1µs
VLANs Supported	4K	4K	4K	4K
Link Aggregation Group Size	8	8	8	8
Total Link Aggregation Groups	12	14	26	26
Packet Buffers	1 MB	1.5 MB	1.5 MB	1.5 MB
DRAM	512 MB	512 MB	512 MB	512 MB
FLASH	128 MB	128 MB	128 MB	128 MB
Dimensions				
Height x Width x Length (inches)	1.73 x 17.32 x 10.12	1.73 x 12.2 x 17.5	1.73 x 17.32 x 16.93	1.73 x 16.1 x 17.3
Height x Width x Length (mm)	44 x 440 x 257	44 x 310 x 440	44 x 440 x 430	44 x 410 x 440
Weight	8.49 lbs (3.85 kg)	10.64 lbs (4.83 kg)	13.67 lbs (6.20 kg)	15.4 lbs (7.01 kg)
Environment				
Power Required	100–240V AC, 50–60 Hz	100–240V AC, 50–60 Hz	100–240V AC, 50–60 Hz	100–240V AC, 50–60 Hz
Power Supply	AC built in	AC built in	AC built in	AC built in
Redundant Power	—	Optional FRPS-740	—	Optional FRPS-740
Power Consumption (Average / Maximum)	190 W / 225 W	380 W / 397 W	476 W / 476 W	410 W / 411 W
Heat Dissipation	83.5 BTU/h	85 BTU/h	180 BTU/h	188 BTU/h
Operating Temperature	32–104°F (0–40°C)	32–122°F (0–50°C)	32–122°F (0–50°C)	32–122°F (0–50°C)
Storage Temperature	-4–158°F (-20–70°C)	-4–158°F (-20–70°C)	-4–158°F (-20–70°C)	-4–158°F (-20–70°C)
Humidity	10–90% non-condensing	10–90% non-condensing	10–90% non-condensing	10–90% non-condensing
Certification and Compliance				
			FCC, CE, RCM, VCCI, BSMI, UL, CB, RoHS2	
Warranty				
Fortinet Warranty	Limited lifetime* warranty on all models			

* Fortinet Warranty Policy: <http://www.fortinet.com/doc/legal/EULA.pdf>



FortiSwitch 224D-POE



FortiSwitch 224D-FPOE



FortiSwitch 248D-POE



FortiSwitch 248D-FPOE

SPECIFICATIONS

	FORTISWITCH 424D	FORTISWITCH 424D-POE	FORTISWITCH 424D-FPOE
Hardware Specifications			
Total Network Interfaces	24x GE RJ45 and 2x10 GE SFP+ ports Note: SFP+ ports are compatible with 1 GE SFP	24x GE RJ45 and 2x10 GE SFP+ ports Note: SFP+ ports are compatible with 1 GE SFP	24x GE RJ45 and 2x10 GE SFP+ ports Note: SFP+ ports are compatible with 1 GE SFP
Dedicated Management 10/100 Port	1	1	1
RJ-45 Serial Console Port	1	1	1
Form Factor	1 RU Rack Mount	1 RU Rack Mount	1 RU Rack Mount
Power over Ethernet (PoE) Ports	—	24 (802.3af/at)	24 (802.3af/at)
PoE Power Budget	N/A	185 W	370 W
Mean Time Between Failures	> 10 years	> 10 years	> 10 years
System Specifications			
Switch Type	Web and CLI Managed	Web and CLI Managed	Web and CLI Managed
Switching Capacity	88 Gbps	88 Gbps	88 Gbps
Packets Per Second	131 Mpps	131 Mpps	131 Mpps
MAC Address Storage	16K	16K	16K
Network Latency	< 1µs	< 1µs	< 1µs
VLANs Supported	4K	4K	4K
Link Aggregation Group Size	8	8	8
Total Link Aggregation Groups	13	13	13
Packet Buffers	1.5 MB	1.5 MB	1.5 MB
DRAM	1 GB	1 GB	1 GB
FLASH	128 MB	128 MB	128 MB
Dimensions			
Height x Width x Length (inches)	1.75 x 10.12 x 17.3	1.75 x 10.12 x 17.3	1.73 x 12.2 x 17.5
Height x Width x Length (mm)	44 x 250 x 440	44 x 250 x 440	44 x 310 x 440
Weight	7.14 lbs (3.24 kg)	8.42 lbs (3.82 kg)	10.64 lbs (4.83 kg)
Environment			
Power Required	100–240V AC, 50–60 Hz	100–240V AC, 50–60 Hz	100–240V AC, 50–60 Hz
Power Supply	AC built in	AC built in	AC built in
Redundant Power	Dual power supplies	Optional FRPS-740	Optional FRPS-740
Power Consumption (Average / Maximum)	17.3 W / 17.2 W	208 W / 210 W	397 W / 403 W
Heat Dissipation	69 BTU/h	89 BTU/h	100 BTU/h
Operating Temperature	32–122°F (0–50°C)	32–122°F (0–50°C)	32–122°F (0–50°C)
Storage Temperature	–4–158°F (-20–70°C)	–4–158°F (-20–70°C)	–4–158°F (-20–70°C)
Humidity	10–90% non-condensing	10–90% non-condensing	10–90% non-condensing
Certification and Compliance			
	FCC, CE, RCM, VCCI, BSMI, UL, CB, RoHS2		
Warranty			
Fortinet Warranty	Limited lifetime* warranty on all models		

* Fortinet Warranty Policy: <http://www.fortinet.com/doc/legal/EULA.pdf>



FortiSwitch 424D



FortiSwitch 424D-POE



FortiSwitch 424D-FPOE

SPECIFICATIONS

	FORTISWITCH 448D	FORTISWITCH 448D-POE	FORTISWITCH 448D-FPOE
Hardware Specifications			
Total Network Interfaces	48x GE RJ45 and 4x10 GE SFP+ ports Note: SFP+ ports are compatible with 1 GE SFP	48x GE RJ45 and 4x10 GE SFP+ ports Note: SFP+ ports are compatible with 1 GE SFP	48x GE RJ45 and 4x10 GE SFP+ ports Note: SFP+ ports are compatible with 1 GE SFP
Dedicated Management 10/100 Port	1	1	1
RJ-45 Serial Console Port	1	1	1
Form Factor	1 RU Rack Mount	1 RU Rack Mount	1 RU Rack Mount
Power over Ethernet (PoE) Ports	—	48 (802.3af/at)	48 (802.3af/at)
PoE Power Budget	N/A	370 W	740 W
Mean Time Between Failures	> 10 years	> 10 years	> 10 years
System Specifications			
Switch Type	Web and CLI Managed	Web and CLI Managed	Web and CLI Managed
Switching Capacity	176 Gbps	176 Gbps	176 Gbps
Packets Per Second	262 Mpps	262 Mpps	262 Mpps
MAC Address Storage	16K	16K	16K
Network Latency	< 1µs	< 1µs	< 1µs
VLANs Supported	4K	4K	4K
Link Aggregation Group Size	8	8	8
Total Link Aggregation Groups	26	26	26
Packet Buffers	1.5 MB	1.5 MB	1.5 MB
DRAM	1 GB	1 GB	1 GB
FLASH	128 MB	128 MB	128 MB
Dimensions			
Height x Width x Length (inches)	1.75 x 12.2 x 17.3	1.73 x 16.1 x 17.3	1.73 x 16.1 x 17.3
Height x Width x Length (mm)	44 x 310 x 440	44 x 410 x 440	44 x 410 x 440
Weight	9.15 lbs (4.15 kg)	13.44 lbs (6.1 kg)	15.45 lbs (7.01 kg)
Environment			
Power Required	100–240V AC, 50–60 Hz	100–240V AC, 50–60 Hz	100–240V AC, 50–60 Hz
Power Supply	AC built in	AC built in	AC built in
Redundant Power	Dual power supplies	Optional FRPS-740	Dual power supplies
Power Consumption (Average / Maximum)	38 W / 38 W	417 W / 419 W	790 W / 792 W
Heat Dissipation	147 BTU/h	177 BTU/h	193 BTU/h
Operating Temperature	32–122°F (0–50°C)	32–122°F (0–50°C)	32–122°F (0–50°C)
Storage Temperature	–4–158°F (–20–70°C)	–4–158°F (–20–70°C)	–4–158°F (–20–70°C)
Humidity	10–90% non-condensing	10–90% non-condensing	10–90% non-condensing
Certification and Compliance			
	FCC, CE, RCM, VCCI, BSMI, UL, CB, RoHS2		
Warranty			
Fortinet Warranty	Limited lifetime* warranty on all models		

* Fortinet Warranty Policy: <http://www.fortinet.com/doc/legal/EULA.pdf>



FortiSwitch 448D



FortiSwitch 448D-POE



FortiSwitch 448D-FPOE

SPECIFICATIONS

	FORTISWITCH 524D	FORTISWITCH 524D-FPOE	FORTISWITCH 548D	FORTISWITCH 548D-FPOE
Hardware Specifications				
Total Network Interfaces	24 GE/RJ45 ports, 4x 10 GE SFP+ ports and 2x 40 GE QSFP Note: SFP+ ports are compatible with 1G SFP	24 GE/RJ45 ports, 4x 10 GE SFP+ ports and 2x 40 GE QSFP Note: SFP+ ports are compatible with 1G SFP	48x GE/RJ45 ports, 4x 10 GE SFP+ ports and 2x 40 GE QSFP Note: SFP+ ports are compatible with 1G SFP	48x GE/RJ45 ports, 4x 10 GE SFP+ ports and 2x 40 GE QSFP Note: SFP+ ports are compatible with 1G SFP
Dedicated Management 10/100/1000 Ports	1	1	1	1
RJ-45 Serial Console Port	1	1	1	1
Form Factor	1 RU Rack Mount	1 RU Rack Mount	1 RU Rack Mount	1 RU Rack Mount
Power over Ethernet (PoE) Ports	N/A	24 (802.3af/at)	N/A	48 (802.3af/at)
PoE Power Budget	N/A	400 W	N/A	750 W
Mean Time Between Failures	> 10 years	> 10 years	> 10 years	> 10 years
System Specifications				
Switch Type	Web and CLI Manage	Web and CLI Manage	Web and CLI Manage	Web and CLI Manage
Switching Capacity	288 Gbps	288 Gbps	336 Gbps	336 Gbps
Packets Per Second	428 Mpps	428 Mpps	512 Mpps	512 Mpps
MAC Address Storage	96K	96K	96K	96K
Network Latency	< 2µs	< 2µs	< 2µs	< 2µs
VLANs Supported	4K	4K	4K	4K
Link Aggregation Group Size	24	24	48	48
Total Link Aggregation Groups	15	15	26	26
Packet Buffers	4 MB	4 MB	4 MB	4 MB
DRAM	2 GB	2 GB	2 GB	2 GB
FLASH	128 MB	128 MB	128 MB	128 MB
Dimensions				
Height x Width x Length (inches)	1.75 x 13.8 x 17.3	1.75 x 13.8 x 17.3	1.75 x 13.8 x 17.3	1.75 x 13.8 x 17.3
Height x Width x Length (mm)	44 x 350 x 439	44 x 350 x 439	44 x 350 x 439	44 x 350 x 439
Weight	13.6 lbs (6.2 kg)	15.74 lbs (7.14 kg)	14.1 lbs (6.4 kg)	15.74 lbs (7.14 kg)
Environment				
Power Required	100–240V AC, 50–60 Hz	100–240V AC, 50–60 Hz	100–240V AC, 50–60 Hz	100–240V AC, 50–60 Hz
Power Supply	150 W AC PSU	600 W AC PSU	150 W AC PSU	920 W AC PSU
Redundant Power	Optional FS-PSU-150 (for 150 W backup only)	Optional FS-PSU-600 (for 600 W for additional PoE)	Optional FS-PSU-150 (for 150 W backup only)	Optional FS-PSU-900 (for 900 W for additional PoE)
Power Consumption (Average / Maximum)	73 W / 75 W	570 W / 579 W (full PoE load)	74 W / 77 W	925 W / 961 W (full PoE load)
Heat Dissipation	247 BTU/h	296 BTU/h (full PoE loading)	252 BTU/h	318 BTU/h (full PoE loading)
Operating Temperature	32–113°F (0–45°C)	32–113°F (0–45°C)	32–113°F (0–45°C)	32–113°F (0–45°C)
Storage Temperature	-40–158°F (-40–70°C)	-40–158°F (-40–70°C)	-40–158°F (-40–70°C)	-40–158°F (-40–70°C)
Humidity	5–95% non-condensing	5–95% non-condensing	5–95% non-condensing	5–95% non-condensing
Certification and Compliance				
	FCC, CE, RCM, VCCI, BSMI, UL, CB, RoHS2			
Warranty				
Fortinet Warranty	Limited lifetime* warranty on all models			

* Fortinet Warranty Policy: <http://www.fortinet.com/doc/legal/EULA.pdf>



FortiSwitch 524D



FortiSwitch 524D-FPOE



FortiSwitch 548D



FortiSwitch 548D-FPOE

ORDER INFORMATION

Product	SKU	Description
FortiSwitch 108D-POE	FS-108D-POE	L2 PoE Switch — 8x GE RJ45 ports (including 8x PoE ports with 75 W power budget), 2x shared media pairs (including 2x GE RJ45, 2x GE SFP slots). Fanless switch. FortiGate switch controller compatible.
FortiSwitch 124D	FS-124D	L2 Switch — 24x GE RJ45 ports, 2x GE SFP slots. Fanless switch. FortiGate switch controller compatible.
FortiSwitch 124D-POE	FS-124D-POE	L2 PoE Switch — 24x GE RJ45 ports (including 12x PoE+ ports with 100 W power budget), 2x GE SFP slots. FortiGate switch controller compatible.
FortiSwitch 224D-POE	FS-224D-POE	L2 PoE Switch — 20x GE RJ45 ports (including 12x PoE ports with 185 W power budget), 4x shared media pairs (including 4x GE RJ45, 4x GE SFP slots). FortiGate switch controller compatible.
FortiSwitch 224D-FPOE	FS-224D-FPOE	L2 POE+ Switch — 24x GE RJ45 ports, 2x 1 GE SFP slots. FortiGate switch controller compatible.
FortiSwitch 248D-POE	FS-248D-POE	L2 POE Switch — 48x GE RJ45 ports (24 PoE), 2x 1 GE SFP slots. FortiGate switch controller compatible.
FortiSwitch 248D-FPOE	FS-248D-FPOE	L2 POE+ Switch — 48x GE RJ45 ports, 4x 1 GE SFP slots. FortiGate switch controller compatible.
FortiSwitch 424D	FS-424D	L2 Switch — 24x GE RJ45 ports, 2x 10 GE SFP+ ports. FortiGate switch controller compatible.
FortiSwitch 424D-POE	FS-424D-POE	L2 POE+ Switch — 24x GE RJ45 ports, 2x 10 GE SFP+ slots. 185 W power budget. FortiGate switch controller compatible.
FortiSwitch 424D-FPOE	FS-424D-FPOE	L2 POE+ Switch — 24x GE RJ45 ports, 2x 10 GE SFP+ slots. FortiGate switch controller compatible.
FortiSwitch 448D	FS-448D	L2 Switch — 48x GE RJ45 ports, 4x 10 GE SFP+ slots. FortiGate switch controller compatible.
FortiSwitch 448D-POE	FS-448D-POE	L2 POE+ Switch (185 W) — 48x GE RJ45 ports, 4x 10 GE SFP+ slots. FortiGate switch controller compatible.
FortiSwitch 448D-FPOE	FS-448D-FPOE	L2 POE+ Switch (370 W) — 48x GE RJ45 ports, 4x 10 GE SFP+ slots. FortiGate switch controller compatible.
FortiSwitch 524D	FS-524D	L2 Switch — 24x GE RJ45 ports, 4x 10 GE SFP+ slots, 2x 40 GE QSFP+ slots. FortiGate switch controller compatible.
FortiSwitch 524D-FPOE	FS-524D-FPOE	L2 POE+ Switch — 24x GE RJ45 ports, 4x 10 GE SFP+ slots, 2x 40 GE QSFP+ slots. FortiGate switch controller compatible.
FortiSwitch 548D	FS-548D	L2 Switch — 48x GE RJ45 ports, 4x 10 GE SFP+ slots, 2x 40 GE QSFP+ slots. FortiGate switch controller compatible.
FortiSwitch 548D-FPOE	FS-548D-FPOE	L2 POE+ Switch — 48x GE RJ45 ports, 4x 10 GE SFP+ slots, 2x 40 GE QSFP+ slots. FortiGate switch controller compatible.
Accessories		
1 GE SFP RJ45 Transceiver Module	FG-TRAN-GC	1 GE SFP RJ45 transceiver module for all systems with SFP and SFP/SFP+ slots.
1 GE SFP SX Transceiver Module	FG-TRAN-SX	1 GE SFP SX transceiver module for all systems with SFP and SFP/SFP+ slots.
10 GE SFP+ Transceiver Module, Short Range	FG-TRAN-SFP+SR	10 GE SFP+ transceiver module, short range for all systems with SFP+ and SFP/SFP+ slots
10 GE SFP+ Transceiver Module, Short Range	FS-TRAN-SFP+SR	10 GE SFP+ transceiver module, short range for FortiSwitch (D-series) with SFP+ and SFP/SFP+ slots.
1 GE SFP RJ45 Transceiver Module	FS-TRAN-GC	1 GE SFP RJ45 transceiver module for FortiSwitch (D-series) with SFP and SFP/SFP+ slots.
1 GE SFP LX Transceiver Module, SMF	FR-TRAN-LX	1 GE SFP LX transceiver module, -40–85°C, over SMF, for all systems with SFP and SFP/SFP+ slots.
1 GE SFP LX Transceiver Module	FG-TRAN-LX	1 GE SFP LX transceiver module for all systems with SFP and SFP/SFP+ slots.
10 GBase-ER SFP+ Transceiver Module	FS-TRAN-SFP+ER	10 GBase-ER SFP+ transceiver module, 1550nm, SMF, 40km range for systems with SFP+ slots.
External Redundant AC Power Supply	FRPS-100*	External redundant AC power supply for up to 4 units: FG-300C, FG-310B, FS-348B and FS-448B. Up to 2 units: FG-200B, FG-200D, FG-240D, FG-300D, FG-500D, FDD-200B, FDD-400B, FDD-600B and FDD-800B. Not supported for: FG-200D-POE/240D-POE.
	FRPS-740	Redundant AC power supply for up to 2 units: FS-124D-POE, FS-224D-FPOE, FS-248D-FPOE, FS-424D-FPOE, FS-448D-POE and FS-424D-POE.
Redundant AC Power Supply	FS-PSU-150	AC power supply for FS-548D and FS-524D.
	FS-PSU-600	AC power supply for FS-524D-FPOE.**
	FS-PSU-900	AC power supply for FS-548D-FPOE.**

* Works with the FS-448B and FS-348B.

** Provides additional PoE capacity.



GLOBAL HEADQUARTERS
Fortinet Inc.
899 Kifer Road
Sunnyvale, CA 94086
United States
Tel: +1.408.235.7700
www.fortinet.com/sales

EMEA SALES OFFICE
905 rue Albert Einstein
Valbonne 06560
Alpes-Maritimes, France
Tel: +33.4.8987.0500

APAC SALES OFFICE
300 Beach Road 20-01
The Concourse
Singapore 199555
Tel: +65.6395.2788

LATIN AMERICA SALES OFFICE
Sawgrass Lakes Center
13450 W. Sunrise Blvd., Suite 430
Sunrise, FL 33323
United States
Tel: +1.954.368.9990