



FortiGate/FortiWiFi® 60D Series

Integrated Threat Management for Small Networks



FortiGate/FortiWiFi® 60D Series

FortiGate 60D, 60D-POE, FortiWiFi 60D, 60D-POE

The FortiGate/FortiWiFi 60D Series are compact, all-in-one security appliances that deliver Fortinet’s Connected UTM. Ideal for small business, remote, customer premise equipment (CPE) and retail networks, these appliances offer the network security, connectivity and performance you need at a single low per-device price.

Consolidated Security Solutions

You get advanced threat protection, including firewall, application control, advanced threat protection, IPS, VPN, and web filtering, all from one device that’s easy to deploy and manage. With our FortiGuard® security subscription services you’ll have automated protection against today’s sophisticated threats.

Reduce the need for additional wireless access points by integrating a high-bandwidth “fat-client” into your FortiGate with the FortiWiFi 60D. It’s also a great option to secure mobile devices in BYOD environments with automatic device identification and customizable access and security policies.

VDOMs on the FortiGate/FortiWiFi 60D let you segment networks to enable guest and employee access, or protect things like cardholder data. You get the flexibility to match your business needs and meet compliance standards like PCI and HIPAA.

Highlights

	Firewall Performance	IPS Performance	Interfaces
60D	1.5 Gbps	200 Mbps	Multiple GE RJ45
60D-POE	1.5 Gbps	200 Mbps	Multiple GE RJ45 and GE RJ45 PoE

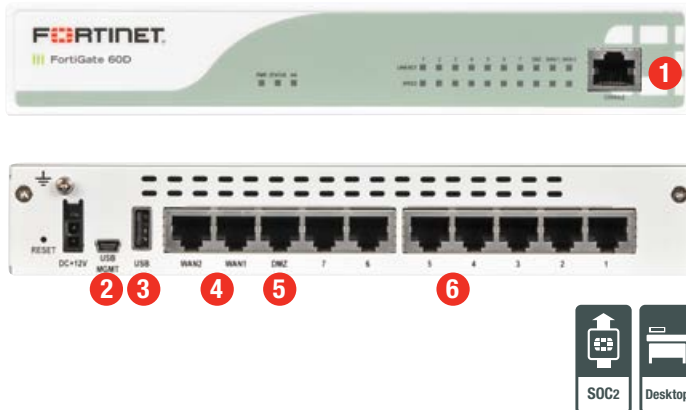
Features & Benefits

- 1.5 Gbps throughput performance ensures your network security won’t be a bottleneck
- Integrated switch and options for PoE simplify your network infrastructure
- Up to 2x WAN, 7x LAN and 1x DMZ interface ports (2x Power over Ethernet ports on PoE models)
- Runs on FortiOS 5 — the most powerful security operating system in the world delivers more security to fight advanced threats, more control to secure mobile devices, and more intelligence to build secure policies



HARDWARE

FortiGate 60D



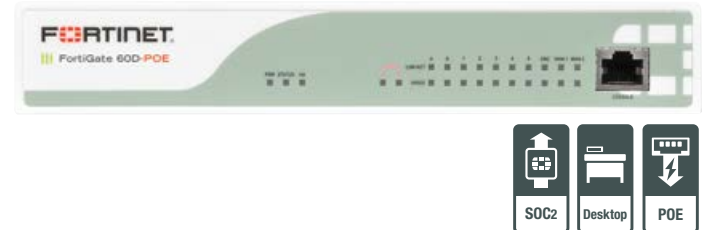
Interfaces

1. Console Port
2. USB Management Port for FortiExplorer
3. USB Port
4. 2x GE RJ45 WAN Ports
5. 1x GE RJ45 DMZ Ports
6. 7x GE RJ45 Internal Ports /
5x GE RJ45 Internal and 2x GE PoE Ports on POE models

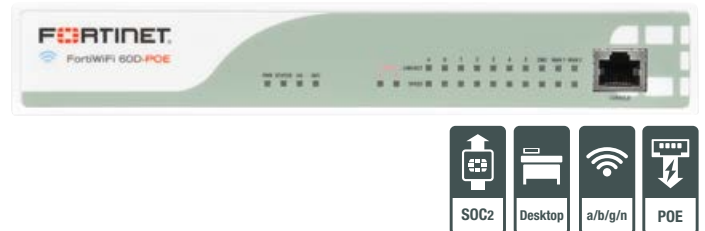
FortiWiFi 60D



FortiGate 60D-POE



FortiWiFi 60D-POE



Powered by FortiASIC SoC2

- Combines a RISC-based CPU with Fortinet's proprietary FortiASIC™ content and network processors for unmatched performance
- Simplifies appliance design and enables breakthrough performance for smaller networks
- Supports firewall acceleration across all packet sizes for maximum throughput
- Delivers accelerated UTM content processing for superior performance and protection
- Accelerates VPN performance for high speed, secure remote access

Install in Minutes with FortiExplorer

The FortiExplorer™ wizard enables you to easily and quickly set up and configure FortiGate and FortiWiFi platforms with easy-to-follow instructions. The application runs on Windows, Mac OS X desktops and laptops as well as popular mobile devices. Simply connect to the appropriate USB port on the appliance, and be fully protected in minutes.

3G/4G WAN Connectivity

The FortiGate/FortiWiFi 60D Series includes a USB port that allows you to plug in a compatible third-party 3G/4G USB modem, providing additional WAN connectivity or a redundant link for maximum reliability.

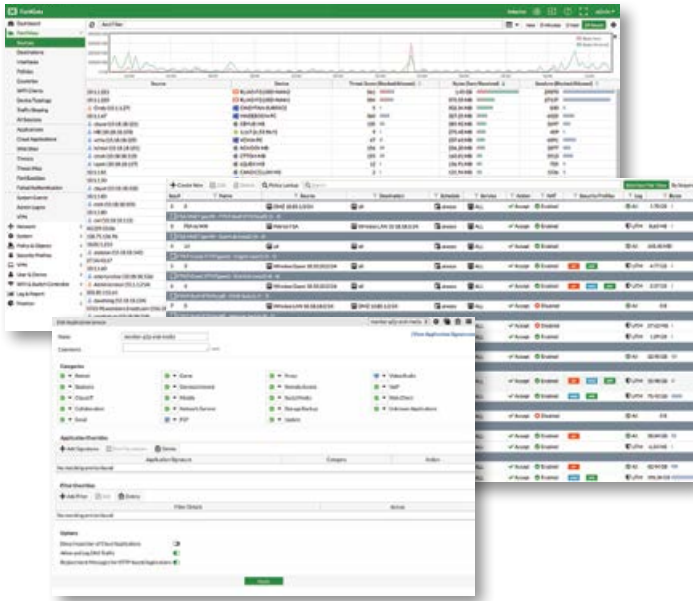
Compact and Reliable Form Factor

Designed for small environments, you can place it on a desktop or wall-mount it. It is small, lightweight yet highly reliable with superior MTBF (Mean Time Between Failure), minimizing the chance of a network disruption.

Superior Wireless Coverage

A built-in dual-band, dual-stream access point with internal antennas is integrated on the FortiWiFi 60D and provides speedy 802.11n coverage on both 2.4 GHz and 5 GHz bands. The dual-band chipset addresses the PCI-DSS compliance requirement for rogue AP wireless scanning, providing maximum protection for regulated environments.

SOFTWARE



FortiOS Management UI —
FortiView, Policy Table and Application Control Panel

FortiOS

Control all the security and networking capabilities across the entire FortiGate platform with one intuitive operating system. Reduce operating expenses and save time with a truly consolidated next generation security platform.

- A truly consolidated platform with one OS for all security and networking services for all FortiGate platforms.
- Industry-leading protection: NSS Labs Recommended, VB100, AV Comparatives and ICSCA validated security and performance.
- Control thousands of applications, block the latest exploits, and filter web traffic based on millions of real-time URL ratings.
- Detect, contain and block advanced attacks automatically in minutes with integrated advanced threat protection framework.
- Solve your networking needs with extensive routing, switching, WiFi, LAN and WAN capabilities.
- Activate all the ASIC-boosted capabilities you need on the fastest firewall platform available.



For more information, please refer to the FortiOS data sheet available at www.fortinet.com

SERVICES

FortiGuard™ Security Services

FortiGuard Labs offers real-time intelligence on the threat landscape, delivering comprehensive security updates across the full range of Fortinet's solutions. Comprised of security threat researchers, engineers, and forensic specialists, the team collaborates with the world's leading threat monitoring organizations, other network and security vendors, as well as law enforcement agencies:

- **Real-time Updates** — 24x7x365 Global Operations research security intelligence, distributed via Fortinet Distributed Network to all Fortinet platforms.
- **Security Research** — FortiGuard Labs have discovered over 170 unique zero-day vulnerabilities to date, totaling millions of automated signature updates monthly.
- **Validated Security Intelligence** — Based on FortiGuard intelligence, Fortinet's network security platform is tested and validated by the world's leading third-party testing labs and customers globally.



For more information, please refer to <http://forti.net/guard>

FortiCare™ Support Services

Our FortiCare customer support team provides global technical support for all Fortinet products. With support staff in the Americas, Europe, Middle East and Asia, FortiCare offers services to meet the needs of enterprises of all sizes:

- **Enhanced Support** — For customers who need support during local business hours only.
- **Comprehensive Support** — For customers who need around-the-clock mission critical support, including advanced exchange hardware replacement.
- **Premium Services** — For global or regional customers who need an assigned Technical Account Manager, enhanced service level agreements, extended software support, priority escalation, on-site visits and more.
- **Professional Services** — For customers with more complex security implementations that require architecture and design services, implementation and deployment services, operational services and more.



For more information, please refer to <http://forti.net/care>

SPECIFICATIONS

	FORTIGATE 60D	FORTIWIFI 60D	FORTIGATE 60D-POE	FORTIWIFI 60D-POE
Hardware Specifications				
GE RJ45 WAN Ports	2	2	2	2
GE RJ45 Internal Ports	7	7	5	5
GE RJ45 PoE Ports	–	–	2	2
GE RJ45 DMZ Ports	1	1	1	1
Wireless Interface	–	802.11 a/b/g/n	–	802.11 a/b/g/n
USB Ports (Client / Server)	1 / 1	1 / 1	1 / 1	1 / 1
Console (RJ45)	1	1	1	1
System Performance				
Firewall Throughput (1518 / 512 / 64 byte UDP packets)	1.5 / 1.5 / 1.5 Gbps			
Firewall Latency (64 byte UDP packets)	4 µs			
Firewall Throughput (Packets Per Second)	2.2 Mpps			
Concurrent Sessions (TCP)	500,000			
New Sessions/Second (TCP)	4,000			
Firewall Policies	5,000			
IPsec VPN Throughput (512 byte packets)	1 Gbps			
Gateway-to-Gateway IPsec VPN Tunnels	200			
Client-to-Gateway IPsec VPN Tunnels	500			
SSL-VPN Throughput	30 Mbps			
Concurrent SSL-VPN Users (Recommended Maximum)	100			
IPS Throughput (HTTP / Enterprise Mix)	200 / 41 Mbps			
SSL Inspection Throughput	32 Mbps			
NGFW Throughput	20 Mbps			
CAPWAP Throughput	250 Mbps			
Virtual Domains (Default / Maximum)	10 / 10			
Maximum Number of FortiAPs (Total / Tunnel Mode)	10 / 5			
Maximum Number of FortiTokens	100			
Maximum Number of Registered FortiClients	200			
High Availability Configurations	Active / Active, Active / Passive, Clustering			
Dimensions				
Height x Width x Length (inches)	1.50 x 8.50 x 5.83	1.50 x 8.50 x 6.18	1.50 x 8.50 x 5.83	1.50 x 8.50 x 6.18
Height x Width x Length (mm)	38 x 216 x 148	38 x 216 x 157	38 x 216 x 148	38 x 216 x 157
Weight	1.9 lbs (0.9 kg)	1.9 lbs (0.9 kg)	1.9 lbs (0.9 kg)	1.9 lbs (0.9 kg)
Form Factor	Desktop	Desktop	Desktop	Desktop
Environment				
Power Required	100–240V AC, 50–60 Hz			
Maximum Current	110 V / 1.5 A, 220 V / 0.75 A	110 V / 1.5 A, 220 V / 0.75 A	110 V / 1.5 A, 220 V / 0.75 A	110 V / 1.5 A, 220 V / 0.75 A
Total Available PoE Power Budget*	–	–	30.8 W	30.8 W
Power Consumption (Average / Maximum)	11.7 / 14 W	11.7 / 14 W	27.4 / 45.2 W	29.9 / 48.2 W
Heat Dissipation	40 BTU/h	40 BTU/h	154 BTU/h	165 BTU/h
Operating Temperature	32–104°F (0–40°C)			
Storage Temperature	-31–158°F (-35–70°C)			
Humidity	20–90% non-condensing			
Operating Altitude	Up to 7,400 ft (2,250 m)			
Compliance				
Safety	FCC Part 15 Class B, C-Tick, VCCI, CE, UL/cUL, CB			
Certifications				
ICSA Labs: Firewall, IPsec, IPS, Antivirus, SSL-VPN				

Note: All performance values are "up to" and vary depending on system configuration. IPsec VPN performance is based on 512 byte UDP packets using AES-256+SHA1. NGFW performance is measured with Flow AV (Quick Mode), IPS and Application Control enabled, based on Enterprise Traffic Mix. SSL Inspection is measured with IPS enabled and HTTP traffic, using TLS v1.2 with AES256-SHA. CAPWAP performance is based on 1444 byte UDP packets.

* Maximum loading on each PoE port is 15.4 W (802.3af).

ORDER INFORMATION

Product	SKU	Description
FortiGate 60D	FG-60D	10x GE RJ45 ports (including 7x Internal ports, 2x WAN ports, 1x DMZ port). Maximum managed FortiAPs (Total / Tunnel) 10 / 5.
FortiWiFi 60D	FWF-60D	10x GE RJ45 ports (including 7x Internal ports, 2x WAN ports, 1x DMZ port), Wireless (802.11a/b/g/n). Maximum managed FortiAPs (Total / Tunnel) 10 / 5.
FortiGate 60D-POE	FG-60D-POE	10x GE RJ45 ports (including 5x Internal ports, 2x WAN ports, 1x DMZ port, 2x PoE ports). Maximum managed FortiAPs (Total / Tunnel) 10 / 5.
FortiWiFi 60D-POE	FWF-60D-POE	10x GE RJ45 ports (including 5x Internal ports, 2x WAN ports, 1x DMZ port, 2x PoE ports), Wireless (802.11a/b/g/n). Maximum managed FortiAPs (Total / Tunnel) 10 / 5.
Optional Accessory		
Rack Mount Tray	SP-RACKTRAY-01	Rack mount tray for FG-30D, FG-40C, FG-50/51E, FG-60C, FG-60D/-POE, FG-70D, FG-80D, FG-90D/-POE, FAD-100E, FRC-100D, FWB-100D, FML-60D, FVE-100E.



GLOBAL HEADQUARTERS
Fortinet Inc.
899 Kifer Road
Sunnyvale, CA 94086
United States
Tel: +1.408.235.7700
www.fortinet.com/sales

EMEA SALES OFFICE
905 rue Albert Einstein
Valbonne 06560
Alpes-Maritimes, France
Tel: +33.4.8987.0500

APAC SALES OFFICE
300 Beach Road 20-01
The Concourse
Singapore 199555
Tel: +65.6395.2788

LATIN AMERICA SALES OFFICE
Sawgrass Lakes Center
13450 W. Sunrise Blvd., Suite 430
Sunrise, FL 33323
United States
Tel: +1.954.368.9990